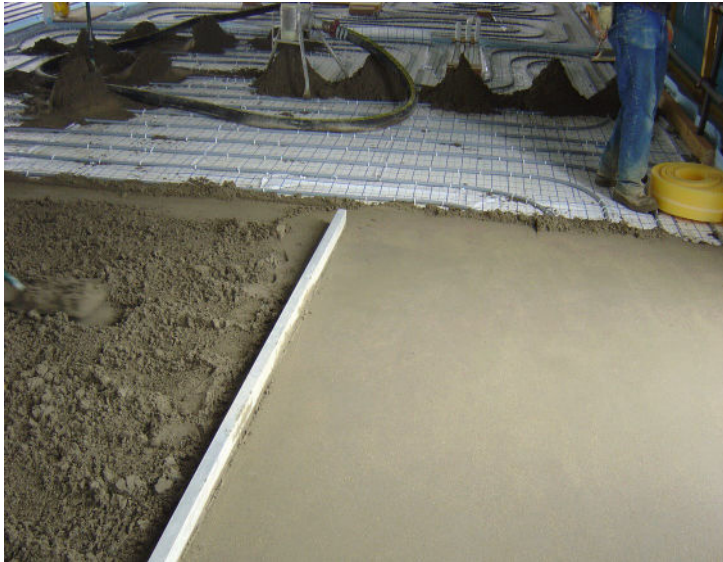


Ronafix Pre-packed Underfloor Heating Screed (40mm+)

Pre-packed polymer modified screed for thin section underfloor heating



FEATURES

- conforms to BS EN 13813
- for use with underfloor heating systems
- high early strength and fast drying allows earlier commissioning of heating systems
- 40mm minimum thickness with 16mm diameter heating pipes
- requires only 20mm cover over heating pipes
- ready for foot traffic after 24 hours
- rapid drying—can receive floor coverings such as vinyl, tiles and carpet after 10 days @ 50mm thick
- excellent resistance to passage of water and water vapour

Description

Ronafix Pre-packed Underfloor Heating Screed is supplied as a pre-packed, ready to use mortar for laying floor screeds on underfloor heating systems. It is supplied complete as a bag of dry components and a bottle of polymer gauging liquid.

Advantages

- Pre-packed factory formulated mortar
- Rapid strength gain
- Fast drying
- Faster commissioning of heating

Performance Data

Commissioning time @ 40mm thickness (time to achieve 75% RH at surface of screed)	7 days @ 20°C
Foot traffic @ 20°C	24 hours
Application thickness (min / max)	40mm / 100mm+
Shrinkage @ 28 days	≤0.02% linear
Compressive strength @ 7 days	36N/mm²
Compressive strength @ 28 days	47N/mm²
Flexural strength @ 28 days	9.5N/mm²
Tensile strength @ 28 days	4.5N/mm²

Results shown are from samples mixed, conditioned and tested in ideal laboratory conditions (20°C, 60% RH). Site results will be lower. Drying times may be longer. When opening to foot traffic do not subject to potential impact damage for 14 days @ 20°C.

Ronafix Pre-packed Underfloor Heating Screed (40mm+)

Pre-packed polymer modified screed for thin section underfloor heating

Product Performance

Determination of Thermal Output (35°C)

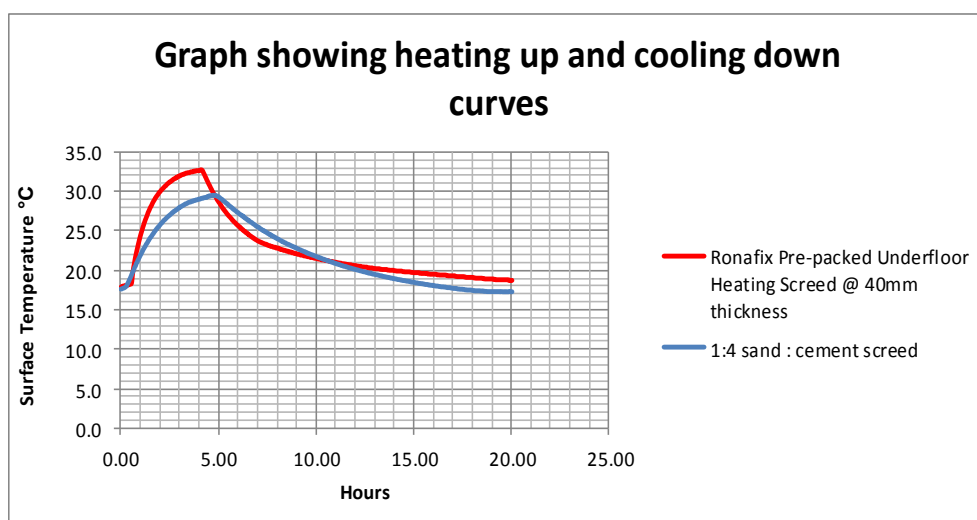
water flow litre per minute	v _v feed water °C	v _R return water °C	v _i standard room °C	v _{F,m} average surface °C	q thermal output Wm ⁻²
1.0	34.7	30.7	19.7	26.3	70.5
2.0	35.1	32.7	19.8	27.2	76.3
3.0	35.1	33.4	20.0	27.3	77.2
4.0	35.1	33.8	20.0	27.5	78.3

Determination of Thermal Output (45°C)

water flow litre per minute	v _v feed water °C	v _R return water °C	v _i standard room °C	v _{F,m} average surface °C	q thermal output Wm ⁻²
1.0	45.1	38.1	19.6	30.4	118.3
2.0	45.1	41.3	20.1	32.0	125.0
3.0	45.1	42.3	20.1	32.2	128.5
4.0	45.2	43.1	20.1	32.4	129.3

The above results were obtained through tests carried out using a 2m x 2m test bed at a thickness of 40mm (20mm cover over the top of the pipes. Pipe spacing *T* set at 200mm and thermally decoupled with 50mm thickness expanded polystyrene λ 0.036 Wm⁻¹K⁻¹.

The above test results have been carried out in line with **BS EN 1264-2 'Water based surface embedded heating and cooling systems—Part 2: Floor Heating: Prove methods for the determination of the thermal output using calculation and test methods'**



Ronafix Pre-packed Underfloor Heating Screed (40mm+)

Pre-packed polymer modified screed for thin section underfloor heating

Instructions for Use

Preparation

The insulation on which the Ronafix Pre-packed Underfloor Heating Screed is being placed must be suitable for floating floor screeds and for the thickness of screed to be laid.

Joints

Position isolation joints in doorways and around all perimeters and openings in the screed. Expansion joints for heated screeds should be positioned so that screed bays are no larger than 40m² with a length no greater than 8m, see BS 8204-1 Design Considerations. If there are separate heating zones, they should be divided by expansion joints. Screed bay joint proportions should ideally be 1:1 length to width and should not exceed 1.5:1. Long narrow bays should be avoided because of the risk of stress relief cracking.

Mixing

Ronafix Pre-packed Underfloor Heating Screed must be mixed by forced action mixer such as a Baron or CreteAngle mixer. Free fall mixers must not be used. Mix for approximately 3 minutes. Over mixing will entrain air which may reduce performance. Once mixed the mortar should be used as quickly as possible.

Placing

As soon as the mortar is mixed, it should be placed onto the substrate, compacted, ruled and closed with a float or trowel. Avoid overworking the surface, this will increase the tackiness of the mortar. The float should be regularly washed, to prevent build up of polymer/cement paste.

Thicker screeds may be applied in two layers, wet on wet to aid compaction. Layers should be of approximately equal thickness. The base layer should be raked after compaction. To ensure satisfactory adhesion the lower layer should be raked to provide a key for the next layer. Should an intermediate layer begin to harden, a priming coat must be applied before application of the next layer.

Curing

Curing must commence as soon as possible after finishing the screed. Cure the screed with tight fitting polythene, placed on to the screed as early as it is possible to do so without damaging the surface. Cover for 24 hours then remove and air cure.

Working Temperatures

Ronafix Pre-packed Underfloor Heating Screed can be used in most weather conditions and in a wide temperature range, typically from +3°C to 25°C.

Traffic

Ronafix Pre-packed Underfloor Heating Screed can receive foot traffic after 24-36 hours (typically at 20°C). This time will vary according to temperature, amount of liquid added during mixing, air circulation and general conditions.

Drying Times

Drying times are dependent on screed thickness, ambient conditions, mixing, air circulation, substrate conditions and other variables. At 20°C & 60%


Ronafix Pre-packed Underfloor Heating Screed

Pre-packed polymer modified screed for thin section underfloor heating

Drying Times (continued)	humidity, Ronafix Pre-packed Underfloor Heating Screed will reach 75% RH after 10 days air curing at 50mm thickness. The relative humidity (RH) at the surface of the screed should be measured with a hygrometer before proceeding to lay floor coverings; see BS 8203:2001+A1:2009.
Contractors	Ronacrete Ltd maintains a list of approved contractors whose knowledge and experience may help to ensure a satisfactory outcome to the works. There are obvious advantages in selecting a contractor who has previous experience of the material but if requested the Ronacrete Technical Department will provide guidance and assistance to other contractors.
Packaging	Ronafix Pre-packed Underfloor Heating Screed is supplied as a 2 component 25kg pack, including pre-blended powders and gauging liquid.
Coverage	A 25kg pack of Ronafix Pre-packed Underfloor Heating Screed will cover approximately 0.275m ² at 40mm thick. All quoted figures are approximate.
Shelf Life and Storage	Ronafix Pre-packed Underfloor Heating Screed should be stored unopened between 5°C and 25°C in dry warehouse conditions and out of direct sunlight. In these conditions shelf life is approximately 6 months.
Health and Safety	Refer to Safety Data Sheet.
Site Attendance	When on site Ronacrete representatives are able, if asked, to give a general indication of the correct method of installing a Ronacrete product. It is important to bear in mind that Ronacrete Ltd is a manufacturer and not an application contractor and it is therefore the responsibility of the contractor and his employer to ensure he is aware of and implements the correct practices and procedures to ensure the correct installation of the product and that liability for its correct installation lies with the contractor and not with Ronacrete Ltd.

Ronafix Pre-packed Underfloor Heating Screed (40mm+)

Pre-packed polymer modified screed for thin section underfloor heating


<p>Ronacrete Ltd, Flex Meadow, Harlow Essex, CM19 5TD, UK</p>
<p>15</p>
<p>BS EN 13813</p> <p>Floor Screed</p>
<p>Product: Ronafix Pre-packed Underfloor Heating Screed 40mm+ Reaction to Fire: A2-s1,d0 Release of Corrosive Substances: None Capillary Water Absorption: < 0.40kg / m² . min0.5 Compressive Strength: > C40 Flexural Strength: > F5 Wear Resistance BCA method: AR1 Dampness Test (40mm thickness headspace): 75% RH @ 20°C at 7 days Release of Dangerous Substances: Refer to Safety Data Sheet</p>

The information detailed in this leaflet is liable to modification from time to time in the light of experience and of normal product application, and before using, customers are advised to check with Ronacrete Ltd, quoting the reference number, that they possess the latest issue. Any person or company using the product without first making further enquiries as to the suitability of the product for the intended use does so at his own risk, and Ronacrete Ltd can accept no responsibility for the performance of the product, or for any loss or damage arising out of such use.